

meetgreenwich

event planners guide



visitgreenwich.org.uk/meetgreenwich

visitgreenwich
time after time

CONTENTS

Welcome to Greenwich

[Meet in Greenwich](#)

[How we can help](#)

[Knowledge Hubs and Sector Strengths](#)

[Visit the Royal Borough of Greenwich](#)

[What's New in Greenwich](#)

Venues

[Directory](#)

[Hybrid Events](#)

[Outdoor Spaces](#)

[Venues overview](#)

Accommodation

[Accommodation Booking Service](#)

[Accommodation overview](#)

Our Supports

[Extend your stay](#)

Greenwich Highlights

Travel Information

Health and Safety

Image bank

Resources

Contact Us

venues@visitgreenwich.org.uk

A PLACE STEEPED IN
ROYAL HERITAGE



WHY

MEET IN GREENWICH

Known worldwide for being the home of time, the Royal Borough of Greenwich has an unrivalled London setting on the southern bank of the River Thames. Greenwich attracts millions of visitors each year to stand astride the Prime Meridian at the Royal Observatory, be immersed in the best entertainment at The O2 and to take in the vibrancy of the markets and breathtaking scenery. Delegates will be excited and eager to attend an event in this impressive location.

Only minutes by DLR, train or river boat from the financial districts of Canary Wharf and the City of London, Greenwich and the surrounding area is home to some of the best conference, meeting and event spaces in London – on land, water and in the air!

Venues range from beautiful historic attractions and academic venues to stunning contemporary buildings, sophisticated river cruisers and a purpose-built conference centre, all in one inspirational destination.

In their free time your delegates will be spoilt for choice as they can enjoy culture at our museums, browse designer-maker stalls and independent shops and stand with one foot in each hemisphere at the Meridian Line, Longitude 0°. With such a great choice of things to do, they may also decide to extend their stay. Greenwich – always worth a little extra time.

How we can help

We offer a range of services including free and impartial advice, venue search and multi venue proposals, venue and accommodation booking tailored to meet your needs and supports to enhance the delegate experience.

Conference Ambassador Programme

Our Conference Ambassador Programme supports individuals who want to host national or international conference(s) in the Royal Borough of Greenwich. If you are interested in becoming an Ambassador or are in the process of organising a conference please [contact us](#).

WHY

MEET IN GREENWICH



Intellectual Capital and Academic Strengths
University of Greenwich;
Ravensbourne University London;
Trinity Laban Conservatoire of Music and Dance



Digital and Creative
Smart cities; innovation;
technology; research



Architecture
Landscape; design; culture; arts



United Nations
Educational, Scientific and
Cultural Organization



Maritime Greenwich
inscribed on the World
Heritage List in 1997

Maritime Greenwich World Heritage Site
Inscribed by UNESCO in 1997



Maritime
Astronomy; navigation; exploration;
time-keeping; scientific endeavour



Manufacturing and Engineering
Enterprise; logistics; infrastructure;
communications; shipbuilding



World Class Venues
The O2 – home to the world's most popular music, sport and entertainment events;
Peter Harrison Planetarium – London's only Planetarium;
InterContinental London – The O2 – UK's largest pillar-free ballroom;
Woolwich Works – London's newest creative district;
Unique and academic venues – museums, palaces and historic houses



Greenwich Mean Time (GMT)
Home of Time



Heritage and Culture
Royal patronage; naval history;
military legacy; arts



Global Gateway
Zone 2 of London's transport
network – rail, river, air

KNOWLEDGE HUBS AND **SECTOR STRENGTHS**

Greenwich is known in every corner of the world, due to its British maritime history, and the role played in establishing the Prime Meridian Line of the world as the navigational 0° of Longitude. The Meridian Line which encircles the globe and precisely where the eastern and western hemispheres meet.

Home to a rich and diverse history of royalty, seafaring, science and engineering, Greenwich offers outstanding architecture and an abundance of history. Maritime Greenwich is one of four UNESCO World Heritage Sites in London, and has a prestigious royal, military and scientific past.

Along with being the home of Greenwich Mean Time, the Royal Observatory is home to the Great Equatorial Telescope – the largest of its kind in the UK and seventh largest in the world; and the Peter Harrison Planetarium – London's only planetarium. Greenwich has many significant venues which can also be hired as unique event spaces.

Greenwich Peninsula is a new digital hub. Leading innovation and technology businesses have established Greenwich as a leader in smart city innovation and urban transformation. Flagship projects include the Smart Mobility Living Lab (SMLL) – the world's most advanced urban testbed.

Digital and Creative industries are backed by academic institutions including Ravensbourne University London, a specialist industry focused university on the Greenwich Peninsula. Ravensbourne University London opened the new Institute for Creativity and Technology in May 2021. The institute is located within the Design District, Europe's first permanent purpose-built design district.

The University of Greenwich offer a range of disciplines across their faculties providing world-leading research, industry expertise and specialist knowledge. Their award-winning research centres and facilities are led by experienced and internationally recognised directors. Greenwich is also home to Trinity Laban Conservatoire of Music and Dance, the UK's only Conservatoire of music and contemporary dance.

From the naval history at Maritime Greenwich, the military legacy continues at the stunning Royal Arsenal Woolwich. Historically home to military barracks and munitions productions over the centuries, which is currently undergoing a dramatic transformation into a key cultural centre for London's arts. The royal connections also continue across the borough with Tudor boat building for Henry VIII and Elizabeth I, in Deptford Creek and Woolwich Dockyard.

Greenwich is renowned for pioneering, scientific and engineering achievements, from the navigation and star gazing which led to Greenwich being home to the Prime Meridian of the world, to the marvel of modern engineering that is the Thames Barrier in Charlton.

For further information on the history of Greenwich please see our [History](#).

A NEW
DIGITAL HUB



WELCOME TO

GREENWICH

Visit Greenwich, the place where hemispheres meet and royal heritage mixes with up-to-the-minute architecture. It's home to a World Heritage Site, Cutty Sark, The O2, Magazine London, Britain's first urban cable car Emirates Air Line, London's oldest enclosed Royal Park, Woolwich Works and the Prime Meridian of the World – longitude zero.

Just 10 minutes by train from London Bridge, enjoy a stroll through Greenwich Park to the Royal Observatory and the Planetarium, or fly 90m high on the Emirates Air Line to a world class show at The O2.

Whatever your interest there's something you'll love – fabulous baroque artistry in the Painted Hall at the Old Royal Naval College, designer-maker arts and crafts in Greenwich Market, and the beautifully conserved Cutty Sark, the fastest ship of her age. Explore Britain's momentous naval history at the National Maritime Museum, enjoy art at The Queen's House and enjoy the views from a riverside pub. London's new landmark Creative District, Woolwich Works, opens in September 2021.

Speed down the river in a streamlined catamaran or cruise gently through London's landmarks to Greenwich, the mighty Thames Barrier and the historic Royal Arsenal in Woolwich.

There's more to Greenwich

Greenwich is about more than the Meridian Line and Cutty Sark. There are fantastic places to visit right across the Royal Borough, including the mighty Thames Barrier, which stretches across the River Thames from Charlton to the East End, or the Art Deco elegance of Eltham Palace and Gardens, childhood home of Henry VIII.

Eltham is also home to Well Hall Pleasaunce, a pretty, ornamental garden where Railway Children author E Nesbit had a house in the early part of the last century. The recently refurbished and gloriously Gothic folly, Severndroog Castle, stands in ancient Oxleas Wood, not far from another example of fine English architecture – the Jacobean grandeur of Charlton House.

The Royal Arsenal in Woolwich is an excellent example of urban renewal at its best and where an emerging new Creative District is being built. The King's Troop, ceremonial saluting battery to the Queen, are also stationed in Woolwich and the Troop's glossy horses are a regular sight in the early morning streets.

So make sure you see all of Greenwich when you visit – you'll be missing out if you don't!

WHAT'S NEW IN

GREENWICH

The visitor experience in Greenwich is always evolving. A summary of new and exciting developments are listed below.

Venues

Woolwich Works – offering 7 flexible spaces the Grade II and II* buildings will come alive later in the year, following the completion of a multi-million pound refurbishment by the Royal Borough of Greenwich to create a new landmark cultural district for London. Opened September 2021.

Accommodation

Radisson RED London Greenwich The O2 – the property will feature 67 modern and spacious design rooms. Located near The O2, the first Radisson RED hotel in London is set to shake up the neighbourhood. Opened September 2021.

LHG (London Hotel Group) – a 293-bed boutique hotel. Located within the Ashburnham Triangle Conservation Area in Greenwich, London, project designed by Squire & Partners will retain the Grade II Listed Magistrates' Court. Opening in 2022.

Attractions and experiences

Cutty Sark Rig Climb Experience – a new adventure at Cutty Sark! Climb from Main Deck up the ship's rigging, to experience the extreme heights the ship's crew had to scale on a daily basis when out at sea. See beautiful views of the Thames and the London city skyline from the top of a true London icon before your zip line ascent to the ground below. Opening in 2022.

TOCA Social – the world's first interactive football and dining experience, combining immersive gaming and world class food and drink. Opened August 2021.

Transport

Uber Boat by Thames Clippers – a new sponsorship with Uber was announced in 2020. Go unlimited and explore Greenwich by river with the new East Zone River Roamer. The East Zone River Roamer is the easiest way to connect all of the East and South East areas of London along the River Thames between Canary Wharf and Woolwich (Royal Arsenal).

The Elizabeth Line – the new Crossrail service will reduce the journey time between Woolwich and the West End. The route will eventually pass through 41 stations from Reading and Heathrow in the West, through new twin-bore 21 km tunnels to Shenfield and Abbey Wood in the East. Opening in the first half of 2022.

For further information please see our [What's New Guide](#).

UK'S LARGEST PILLAR-FREE BALLROOM

59 SUITES

453 GUEST ROOMS

19 MEETING ROOMS

UP TO 3,000 DELEGATES

4,500 SQM CONFERENCE CENTRE

BEST CONFERENCE VENUE – OVER 400 THEATRE STYLE LONDON VENUE AWARDS 2019

InterContinental London – The O2



InterContinental London – The O2 is a luxury hotel and purpose built conference centre featuring the UK's largest pillar-free ballrooms, accommodating up to 3,000 delegates. InterContinental London – The O2 features a dedicated 4,500sqm conference centre with a separate entrance, away from the main hotel lobby allowing for complete privatisation of events.

The impressive Arora Ballroom features over 3,000sqm of pillar-free event space with multiple configurations, providing the perfect setting for large-scale award ceremonies, exhibitions, conferences and parties. In addition there are 19 additional event spaces that can also be used individually or as a multiple event space for dining, breakout sessions and meetings to accompany main event.

- 3,100sqm event space
- 2 service lifts (5 tonnes capacity)
- Dedicated ground floor reception
- Riverview Suites & 9 further meeting rooms
- 7.5m high ceiling with heavy-duty rigging points
- High-speed Wi-Fi
- Pre-function foyer area
- Hybrid and Virtual options

Outdoor spaces include The Oval.

Enjoy a vibrant mix of destination inspired bars & restaurants – Meridian Lounge, Market Brasserie, Peninsula Restaurant (2019 Michelin-guide), Clipper Bar, Eighteen Sky Bar.

A state-of-the-art Spa with 8 treatment rooms, fully equipped gym and a 17-metre indoor pool.

WORLD'S ONLY SURVIVING TEA CLIPPER

450 RECEPTION
300 THEATRE
270 BANQUETING
BEST UNIQUE VENUE HIRE SPACE AWARDS 2019

Cutty Sark

One of the world's most famous and iconic sailing ships, Cutty Sark was the fastest and greatest of her time. Built in 1869 to carry back tea from China, this monument to the glory days of sail travelled the world and survived the high seas. The ship boasts a spectacular riverside setting with sweeping views across the River Thames and to the city beyond, providing flexibility and amazing photography opportunities.

Entertaining at Cutty Sark is a truly unique and exclusive experience, with four superb locations for evening events. The ship's gleaming copper-clad hull is suspended dramatically above the Dry Berth – an awe-inspiring event space ideal for receptions, dinners and product launches – while the 'Tween Deck – where precious cargoes were once carried – provides a unique space for dinners.

Enjoy sunset reception drinks on the Weather Deck with breath-taking views across London, or treat guests to a private dinner for ten in the mahogany-panelled Master's Saloon.



EUROPE'S FINEST DINING HALL

400 RECEPTION
300 THEATRE
400 BANQUETING

Painted Hall

Old Royal Naval College's flagship space, Sir James Thornhill's baroque masterpiece, Britain's 'Sistine Chapel' the Painted Hall is considered the 'finest dining hall in Europe'. It makes a prestigious and elegant venue for weddings, gala dinners, awards ceremonies and drinks receptions. The maximum capacity for the Painted Hall is 400 guests, seated or standing.

The neoclassical Chapel provides an exceptional setting for weddings, concerts and awards ceremonies. A pair of arresting vaulted undercrofts, are available in conjunction with the Painted Hall or Chapel. Commissioned by Charles II as his new royal palace in 1660, The Admiral's House is the oldest building available to be hired in its entirety, by floor, or by room.

Outdoor spaces include the Upper and Lower Grand Squares, King William and King Charles Lawns, Pepys Lawn, Monument Gardens and Chapel Garden, King William Courtyard and Queen Mary Courtyard, King William and Queen Mary Colonnades.



WORLD'S LARGEST MARITIME MUSEUM



1000 RECEPTION
300 THEATRE
580 BANQUETING

National Maritime Museum



Spanned by a spectacular glass roof, the heart of the National Maritime Museum is a meeting of classical 19th-century grandeur and innovative modern architecture. Its capacity for large-scale staging, rigging and branding makes it ideal for award shows, gala dinners and product launches.

On the ground floor, the Square is an optimal space for receptions and pre-dinner drinks while guests view one of the museum's many amazing galleries. On warm evenings, receptions can be hosted under the adjacent stone colonnades with sweeping views across Greenwich Park.

The Great Map, situated on the first floor, is a light, open and modern space. The newly-installed lighting and audio rig is a great add-on to create the perfect dramatic backdrop to award ceremonies and gala dinners for up to 580 seated guests. The museum also houses a lecture theatre, ideal for daytime meetings and conferences, and a photography gallery which opened in 2018; a great space for drinks receptions.



HOME TO THE WORLD'S MOST POPULAR MUSIC, SPORT AND ENTERTAINMENT EVENTS

THE O2 ARENA – UP TO 15,000 DELEGATES
INDIGO AT THE O2 – UP TO 1,617 DELEGATES
FLEXIBLE EVENT SPACES
WORLD CLASS FACILITIES

The O2

The O2 arena can host conference events from 1,500 to 15,000 delegates. The VIP areas and concourses are perfectly suited for break-outs, catering and networking spaces. Moving the stage forward and draping the top tier of seats gives comfort to any size conference and gives them a place to grow year on year. The arena can hold awards events and dinners from 800 to 2,200 guests on the arena floor.

indigo at The O2 is fast becoming one of London's most sought after venues. Originally designed for music concerts it has now opened its doors to the corporate, sport and comedy world. Established as a large well known stand-alone venue it has the flexibility to change from a standing gig venue into a private dining space for 540 guests or a conference space seating over 1,000 delegates. With its built in stage, back stage facilities, preferred caterers and a private VIP lounge it works hard to develop, inspire and meet the needs of all clients. The in house AV and technical inclusions are vast, impressive and most are included within the hire charge. The large capacities and the flexibility of the space make it a great choice for promoters and companies looking to give their guests something different.

Other spaces include the American Express Invites Lounge, Chairman's Lounge, Green Room and Sky Backstage.



LONDON'S NEWEST CREATIVE DISTRICT

7 FLEXIBLE SPACES

LARGEST SPACE – FIREWORKS FACTORY

1,800 RECEPTION, 1,200+ THEATRE, 1,000 BANQUETING

Woolwich Works

Woolwich Works is a brand new cultural hub on the beautifully restored Royal Arsenal, opening in September 2021. Conveniently located on the River Thames, the Grade II and II* listed buildings have retained many historic features and are available for hire. The beautiful buildings will come alive in Summer 2021, following the completion of a £31.59m refurbishment by the Royal Borough of Greenwich to create a new landmark cultural district for London.

The flexible spaces are perfect for performances, rehearsals, conferences, weddings, parties, meetings, community events and more. The riverside location is served by Woolwich Arsenal pier and the new Woolwich Crossrail station when it opens in the first half of 2022, will be less than five minutes' walk from its doors. London City Airport is minutes away by DLR.

The Fireworks Factory's main space is the largest, with a remarkable 1500m² of flat floor space. Its flexible design offers complete freedom to configure each layout on the long or short axis, or even in the round, with performance configurations from 300 to 1,200 seats, or up to 1,800 standing. It's set to make its mark as one of London's most intimate large venues.

Other spaces include the Knight Gallery, Beanfeast, Stonecutters Studio, Ropekeepers Studio, Coopers Studio and Stitchers Studio.

WORLD CLASS ACADEMIC VENUES



EXHIBITION SPACE
MEETING AND SYNDICATE ROOMS
LARGE CAPACITY LECTURE THEATRES – UP TO 320 DELEGATES

University of Greenwich



The Greenwich Campus is based in the Old Royal Naval College on the banks of the River Thames. The campus boasts some of London's finest Grade I listed baroque buildings and forms part of the Maritime Greenwich UNESCO World Heritage Site.

Greenwich Maritime - Old Royal Naval College

The Greenwich Campus offers year round facilities for all types of event in both modern and period venues that offer elegant meeting rooms, syndicate spaces and large capacity lecture theatres. During the summer months en-suite student style bedroom accommodation is also available.

Stockwell Street

Situated in the heart of Greenwich town centre is the state-of-the-art Stockwell Street building. The building offers a large exhibition space on the first floor, as well as two modern lecture theatres and a variety of meeting rooms all equipped with the latest technology and AV equipment.

Ravensbourne University London

Ravensbourne University London has versatile and flexible spaces, with modern facilities for diverse needs. Offering a unique venue for all events, from celebrations to conferences, festivals, seminars, award ceremonies and showcases.

LONDON'S LARGEST PURPOSE-BUILT SPACE

UP TO 3,000 DELEGATES
3,205 SQM OF VERSATILE INTERIOR SPACE
OUTDOOR SHOWGROUND – FURTHER 7,000 DELEGATES

Magazine London

Magazine London is a new event space for the capital. This purpose-built, 19,994 sqm destination is the largest of its kind in London, offering a striking blank canvas for culture and commerce; it is a unique opportunity for brands and businesses to interact with global and local audiences.

The venue is defined by simple architectural form, offering clean and functional spaces that provide a means for large-scale creative expression.

Magazine boasts 3,205 sqm of versatile interior space for up to 3,000 people and can extend to accommodate a further 7,000 people across the venue's outdoor showground. Access is also available to The Pylon, a site inspired by the famous sculpture by Alex Chinneck, that stands as a key feature of the surrounding area. Magazine London encapsulates a flexible and inspiring environment, providing an unrivalled landscape for brand events, awards dinners, conferences, exhibitions, fashion, the arts and ticketed culture.



LONDON'S BIGGEST CINEMA



19 SCREENS
UP TO 853 DELEGATES
BEST ALL-ROUND USE OF TECHNOLOGY HIRE SPACE AWARDS 2019

Cineworld at The O2

London's biggest cinema is set in the world's favourite arena and hosts a wide variety of high-profile events.

Cineworld at The O2 features a whopping 19 screens including special formats Screen X (with 270-degree surround views), 4DX (with moving seats, scent, water, wind, fog and snow), ViP (with luxury recliners and exclusive bar area) and the breath-taking Superscreen, the largest auditorium in the UK.

Within unrivalled branding opportunities, premium screens and seating, ample catering and breakout space throughout, Cineworld at The O2 is London's ultimate event location.

INTIMATE & BEAUTIFUL VENUES



Peter Harrison Planetarium

The Peter Harrison Planetarium is the home of space and London's only Planetarium. 130 maximum capacity.



Queen Mary Undercroft

The Queen Mary Undercroft is situated within the same building as the Chapel within the grounds of the Old Royal Naval College, offering its majestic columns, built-in bar, dancefloor and high vaulted ceiling. 290 maximum capacity.



Queen's House

The Queen's House is a masterpiece of 17th century architecture, see world-class art and royal history in Britain's first and finest classical building. 150 maximum capacity.



Royal Observatory

The Royal Observatory is the home of British astronomy, Greenwich Mean Time and the Prime Meridian of the world. 120 maximum capacity.



Pictured: top left – bottom right

INTIMATE & BEAUTIFUL VENUES



Charlton Athletic Football Club

The Valley at Charlton Athletic FC is one of the largest event venues in South-East London, offering flexible suites and spaces for intimate meetings to large business events. 1,000 maximum capacity in largest space.



The Fan Museum

The Fan Museum is the only museum in the UK devoted to the history of fans and the art of fan making. It is home to more than 4,000 predominantly antique fans from around the world, dating from the 11th century to the present day. 35 maximum capacity.



Eltham Palace and Gardens

Eltham Palace and Gardens is part showpiece of Art Deco design and 1930s cutting-edge technology, and part medieval royal palace. 300 maximum capacity.



Admiral's House

Commissioned by Charles II as his new royal palace in 1660, The Admiral's House is the oldest building on the Old Royal Naval College grounds, with views of the River Thames and a regal yet intimate atmosphere. 90 maximum capacity.

Pictured: top left – bottom right

VIRTUAL AND HYBRID EVENTS



Hybrid Events

Hybrid and Virtual event offerings are available at:

- InterContinental London - The O2
- Woolwich Works
- Magazine London

INSPIRATIONAL OUTDOOR SPACES



Outdoor Spaces

Large outdoor spaces are available at:

- Royal Museums Greenwich
- Old Royal Naval College
- InterContinental London - The O2
- Woolwich Works
- Magazine London

VENUES

Venue	Maximum Capacity	Number of Event Spaces	Largest Space: Reception	Largest Space: Theatre	Largest Space: Banqueting	Largest Space: Cabaret	Largest Space: Boardroom	Location
Admiral's House (Old Royal Naval College)	90	5	70	70	60	48	35	Greenwich
Charlton Athletic Football Club		19	1,000	700		450		Charlton
Cineworld at The O2		22	1,000	853	500	250		Greenwich Peninsula
Cutty Sark (Royal Museums Greenwich)	450	4	450	300	270	135		Greenwich
Eltham Palace and Gardens	300	4	300	200	200			Eltham
indigo at The O2		2	1,500	1,617	540	360		Greenwich Peninsula
InterContinental London – The O2 [⌘]	3,000	20	3,000	3,000	2,520	1,720		Greenwich Peninsula
Magazine London	3,000 <small>(10,000 inc. outdoor space)</small>	7	3,000	1,920	1,360	952		Greenwich Peninsula
National Maritime Museum (Royal Museums Greenwich)	1,000 <small>(5,000 on outdoor grounds)</small>	8	1,000	400	580	250	18	Greenwich
Painted Hall (Old Royal Naval College)	400	1	400	300	400			Greenwich
Peter Harrison Planetarium (Royal Museums Greenwich)	150	3	150	130	80	40	12	Greenwich
Queen's House (Royal Museums Greenwich)	150	3	150	120	120	60		Greenwich
Queen Mary Undercroft (Old Royal Naval College)	290	1	290	200	180	100	40	Greenwich
Ravensbourne University London		9	300	250		138	22	Greenwich Peninsula
Royal Observatory (Royal Museums Greenwich)	120	3	120	60	60	30		Greenwich
The Fan Museum	35	1	35	30	32	24		Greenwich
The O2		7	3,000	15,000	2,200		12	Greenwich Peninsula
University of Greenwich ^{* ⌘}		64		320	100	63	50	Greenwich
Woolwich Works		7	1,800	1,200	1,000	927	63	Woolwich

For further information please see our [Venues](#).

⌘ Bedrooms available

* In summer months only

TRAVEL IN STYLE



18 VESSELS
12 TO 220 CAPACITY
PRIVATE HIRE AVAILABLE

Uber Boat by Thames Clippers



Uber Boat by Thames Clippers are the fastest and most frequent fleet on the river, with 18 vessels available for private hire. Each of the catamarans are spacious, stylish and staffed by a friendly and experienced crew.

For corporate and private clients they offer seven different sizes of vessel with the option of carrying between 12 and 220 guests. The route, length and speed of journey, stop off locations, style of catering, use of facilities on board and time of travel are flexible.

All boats are wheelchair, mobility scooter and pram accessible by ramp. All boats, except Star, Storm and Sky Clipper, have accessible toilets and larger boats have baby changing tables.

The River Bus service currently serves 23 piers, from Putney Pier in the West to Woolwich (Royal Arsenal) Pier in the East. In Winter 2021, the service will expand further east when the 24th pier, Barking Riverside Pier, opens. River Bus tickets are now available through the Uber app, in addition to existing payment methods, meaning Uber app users can buy tickets in advance and then use QR technology to board.

A RANGE OF ACCOMMODATION

OPTIONS FOR ALL BUDGETS
PREFERENTIAL RATES
BLOCK BOOKINGS
WIDE CHOICE OF ACCOMMODATION – HOTELS TO SERVICED ACCOMMODATION

Accommodation

Greenwich offers a wide choice of accommodation for delegates. There are options to suit all budgets with a range of international brands, serviced apartments, boutique and independent hotels.

Our Accommodation Booking Service provides preferential rates and block bookings.

ACCOMMODATION

Hotel/Aparthotel	Number of Bedrooms	Number of Event Spaces	Largest Space: Reception	Largest Space: Theatre	Largest Space: Banqueting	Location
InterContinental London - The O2	453	20	3,000	3,000	2,520	Greenwich Peninsula
Radisson RED London Greenwich The O2	67	-	-	-	-	Greenwich Peninsula
DoubleTree by Hilton London Greenwich	146	3	100	70	60	Greenwich
Novotel London Greenwich	151	6	92	92	60	Greenwich
ibis London Greenwich Hotel	120	-	-	-	-	Greenwich
Good Hotel London	148	9	150	65	70	Royal Victoria Dock
Sunborn London Yacht Hotel	132	8	250	90	200	Royal Victoria Dock
Aloft London Excel	240	6	40	30	18	Royal Victoria Dock
The Clarendon Hotel	175	5	150	120	150	Blackheath
London Marriott Hotel Canary Wharf	301	19	290	290	180	Canary Wharf
Radisson Blu Edwardian New Providence Wharf Hotel	169	7	250	250	180	Canary Wharf
Canary Riverside Plaza Hotel	142	8	280	220	200	Canary Wharf
The Collective Canary Wharf	388	10	60	20	150	Canary Wharf
Staycity Aparthotels Greenwich High Road	68	-	-	-	-	Greenwich
Staycity Aparthotels Deptford Bridge Station	93	-	-	-	-	Lewisham
New Openings						
LHG (London Hotel Group) – opening in 2022	293	-	-	-	-	Greenwich

For further information please see our [Accommodation](#).



EXTEND
YOUR STAY

**TEAM BUILDING
SOCIAL PROGRAMMES
SPOUSE PROGRAMMES
PRE/POST CONFERENCE EXTENSION**

How We Can Help

We offer free and impartial advice to event planners, conference and meeting organisers and associations. We also provide logistical and marketing support to enhance the delegate experience.

Our supports include:

- Free impartial venue finding service and multi venue proposals
- Expert knowledge of venues
- Accommodation booking service
- Bid preparation and support
- Conference Ambassador Programme – connections to local ambassadors
- Transport and travel advice
- Site visits and FAM trips
- Social programming – itineraries, guided tours and discounted group rates
- Pre/post conference extension itineraries
- Spouse programming
- Delegate welcome – maps, images, content and information

We run one of just two Tourist Information Centres in London and are used to welcoming international visitors from all over the world.

WORLD CLASS ATTRACTIONS



Cutty Sark

Cutty Sark is the world's sole-surviving tea clipper, celebrated for her record-breaking passages around the globe. Now an award-winning visitor attraction in Greenwich.



EXCLUSIVE EXPERIENCES



Up at The O2

Up at The O2 takes you on an exhilarating 90-minute climb over the roof of the world's most popular entertainment venue. See a different side of the city, by day, at twilight or sunset.



STAND ON THE PRIME MERIDIAN



Royal Observatory

Home of Greenwich Mean Time (GMT), the Prime Meridian of the world and London's only Planetarium. Founded in 1675 by Charles II, the Royal Observatory is a unique visitor attraction and a must-see for any visit to London.



THE WORLD'S MOST POPULAR MUSIC, SPORT AND ENTERTAINMENT VENUE



The O2

The O2 is home to the world's most popular music, sport and entertainment events, and so much more. Get up to 70% off 60 superstar brands at Icon Outlet shopping. Knock down pins at Hollywood Bowl, freejump at Oxygen Freejumping or watch the latest blockbusters at London's biggest cinema. See a different side of the city by climbing over the famous roof at Up at The O2. Feeling hungry? Choose from over 30 restaurants and bars open daily. It all happens here.

FINE
DINING



InterContinental London – The O2

Private Dining Room at the award-winning Michelin-guide Peninsula Restaurant at InterContinental London – The O2.



LONDON'S MOST EXCITING RETAIL DESTINATION



Icon Outlet at The O2

Icon Outlet at The O2 is one of London's most exciting retail destinations. Open 7 days a week, you'll find over 60 superstar fashion and lifestyle brands with up to 70% off RRP every day including, adidas, Calvin Klein, Dune London, G-Star Raw, GAP, Levis, Nike, Ted Baker, Tommy Hilfiger and many more.

BOUTIQUE SHOPPING



Greenwich Market

London's only historic market set within a World Heritage Site.

LONDON'S LEADING GOLF DESTINATION



Greenwich Peninsula Golf Driving Range

The Greenwich Peninsula Driving Range is a state of the art 60 bay golf and leisure facility – one of the most successful ranges in Europe.

ACCESSIBILITY & **CONNECTIVITY**

Greenwich is well linked to central London, 10 minutes from London Bridge on London Underground and National Rail, 15 minutes on the Docklands Light Railway (DLR) or 20 minutes on Uber Boat by Thames Clippers.

Positioned on the River Thames, Greenwich makes for a scenic and memorable visit to London and means you can connect to all parts of the Royal Borough of Greenwich via river transport – showcasing the longest river front in London.

Greenwich is incredibly well served by a range of transport, including river and rail.

- **London City Airport** is just the other side of the river Thames, a short and pleasant journey on the Docklands Light Railway (DLR) from North Greenwich – 10 minutes.
- **London Gatwick Airport** is 45 minutes away by National Rail.
- **London Heathrow Airport** is 50 minutes away by London Underground and National Rail.
- **London Luton Airport** is 1h10m away by London Underground and National Rail.
- **London Stansted Airport** is 1h20m away by London Underground and National Rail.
- **London St Pancras International** for Eurostar is 25 minutes away by London Underground and National Rail/Docklands Light Railway (DLR).

Greenwich is in Zone 2 of London's transport network and is easily accessible from major train stations:

- **Stratford station** for train services from Essex and East Anglia is 8 minutes away.
- All other major train stations including Waterloo, Charing Cross, Victoria, Paddington, Euston, and King's Cross are within 20 to 40 minutes reach of Greenwich.

Transport to and from Woolwich is easy and frequent with great links with the centre of London via DLR, train, bus and Uber Boat by Thames Clippers. When the Elizabeth Line opens in the first half of 2022, Woolwich will be directly connected to the heart of central London, with a journey time of just 19 minutes!



For further information please see our [Travel Information](#) and [Maps](#).

HEALTH & **SAFETY**

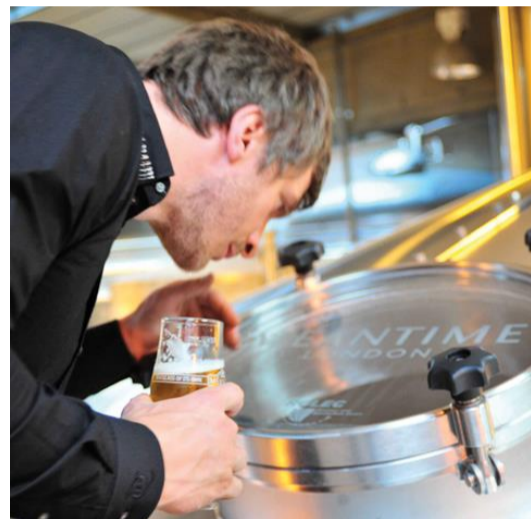
Tourism, events and hospitality businesses have changed their practices to maintain public and staff safety. Venue and accommodation partners have revised capacities to encourage social distancing during live events.

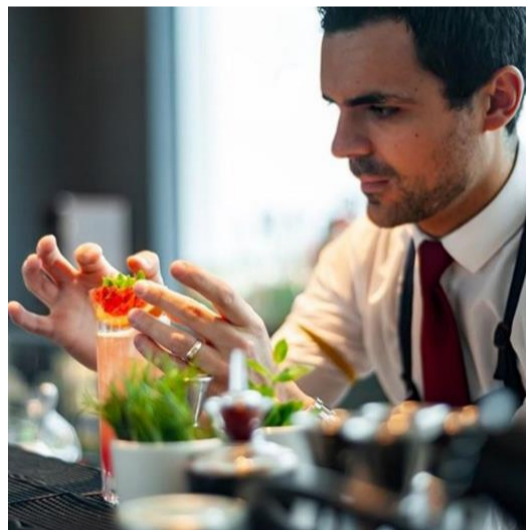
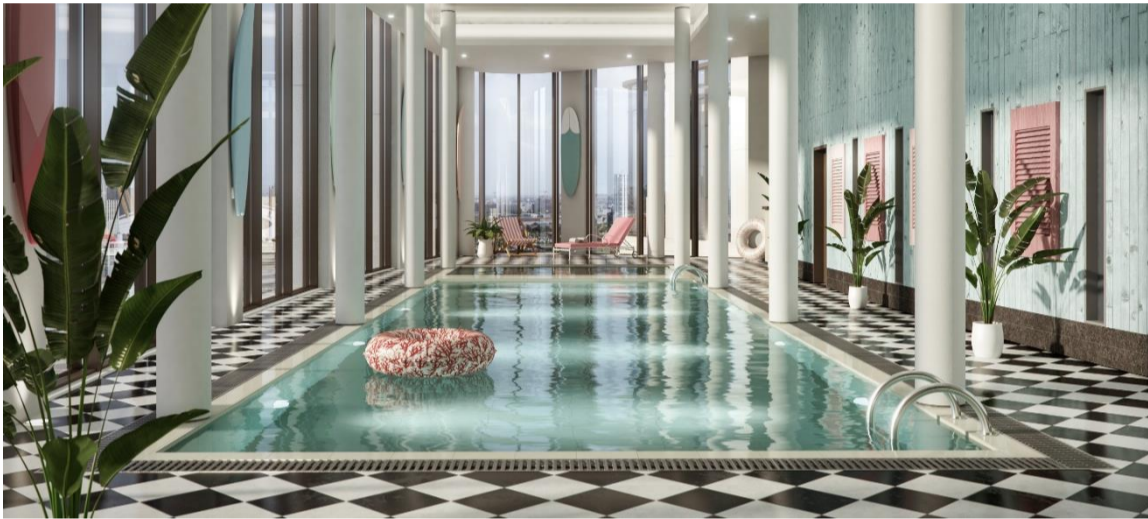
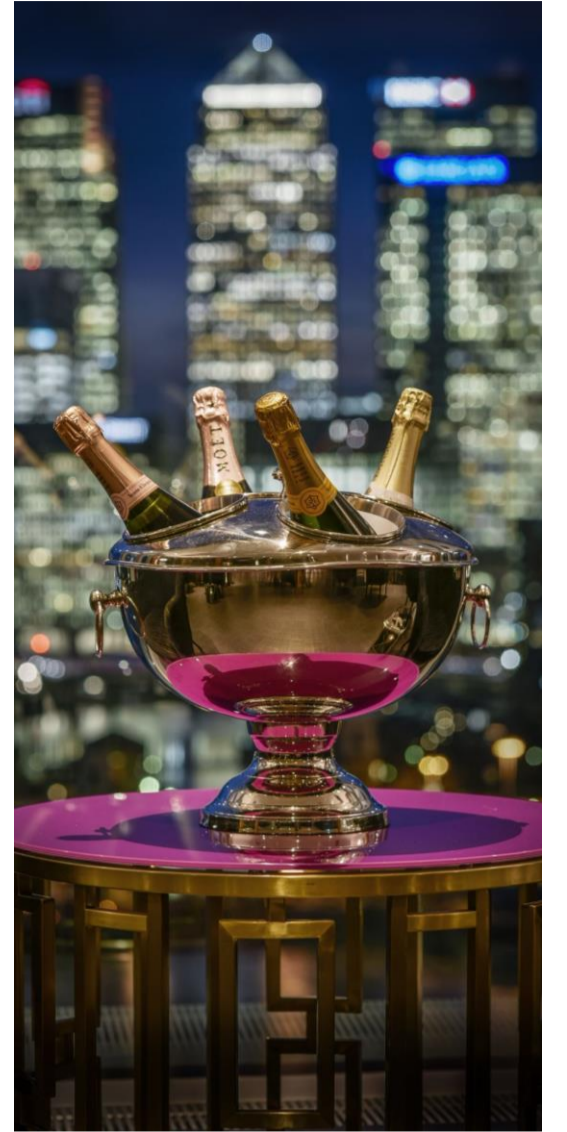
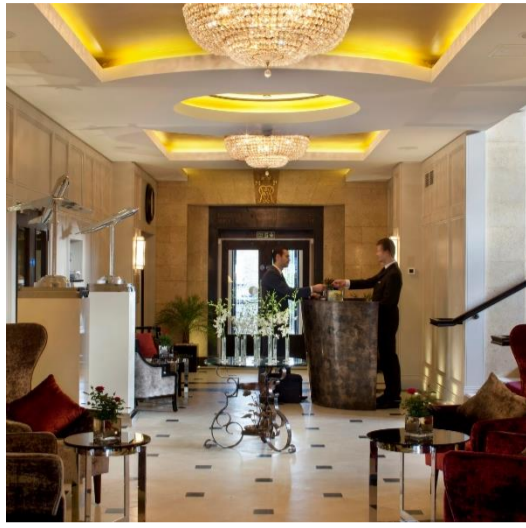
“We’re Good To Go” is the official UK mark to signal that a tourism and events business has worked hard to follow Government and industry Covid-19 guidelines and has a process in place to maintain cleanliness and aid social distancing. Further information can be found [here](#).

In addition to the “We’re Good To Go” standard many of our partners have accreditations in place to acknowledge their enhanced cleaning procedures.

For the latest Covid-19 travel guidance please refer to the official UK Government website gov.uk/coronavirus.







EVENT PLANNERS GUIDE

venues@visitgreenwich.org.uk

visitgreenwich.org.uk/meetgreenwich

[Destination Video](#)